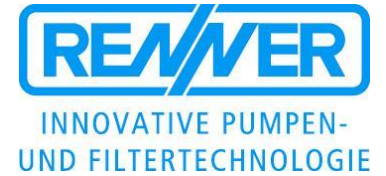


DATASHEET
Magnetically coupled pump
 Plastic coated

Motor output
 1,5kW
 Variable speed !



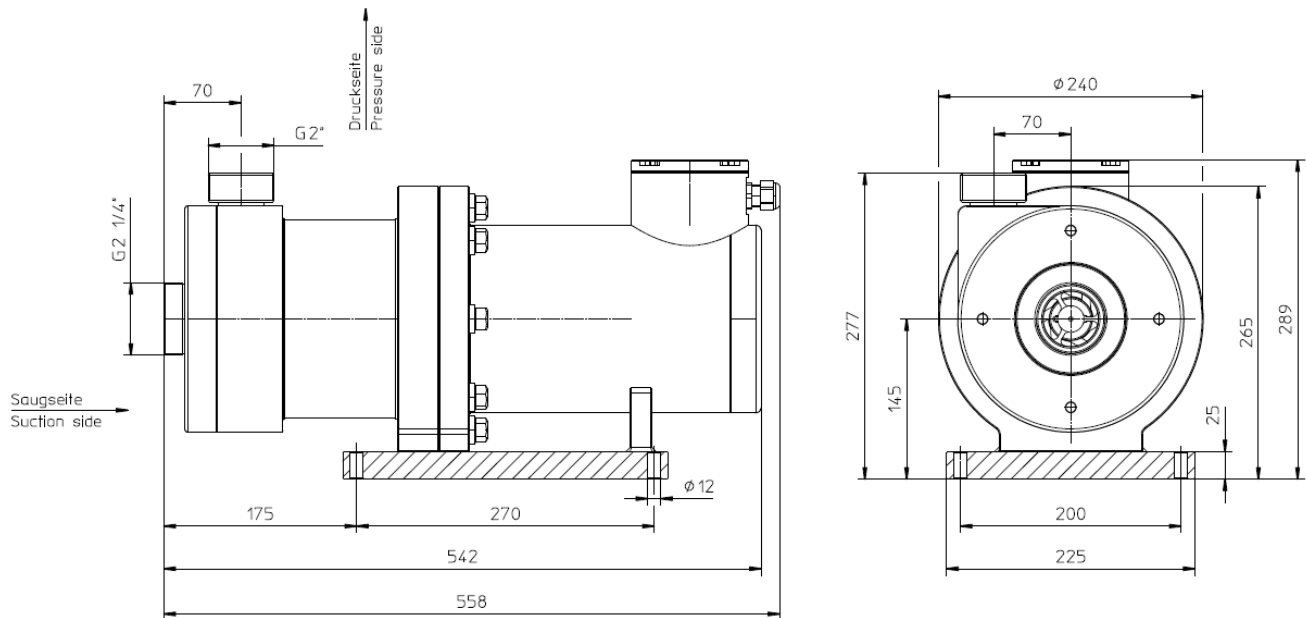
RM-KM 18/240

Magnetically coupled, centrifugal pumps, single-stage, horizontal, non self-priming, made in monobloc design.

		RM-KM Type 18/240
Motor output	[kW]	1,5
Voltage range	[V]	3 / PE AC 320V ... 528V
Frequency range	[Hz]	45 ... 65
Communication module VFD		Standard I/O (optional also with different BUS – module)
Head max.	[mWS]	18
Capacity max.	[l/min.]	330
Density max. @ Qmax **	[g/cm³]	1,3

** For liquids with higher specific gravities all RM-KM - pump are available with smaller impeller diameters !

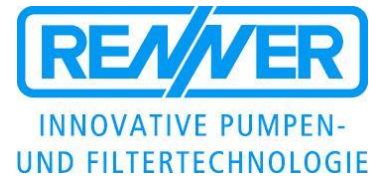
Dimensional drawings [mm]



Motor dimensions can be different ! • Subject to technical alterations !

DATASHEET
Magnetically coupled pump
Plastic coated

Motor output
 1,5kW
 Variable speed !



RM-KM 18/240

Materials:

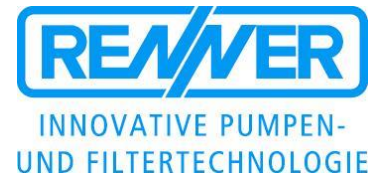


Technical data

Medium-temperature max.	PP PVDF	80 °C 95 °C	<p>The graph plots Förderhöhe / head [mWs] on the left y-axis (0.0 to 24.0) and Motorleistung / motor output [W] on the right y-axis (0 to 3000) against Förderleistung / capacity [l/min.] on the x-axis (0 to 350). A blue curve shows head decreasing from ~18.5 mWs at 0 l/min to ~4.0 mWs at 320 l/min. A green curve shows motor output increasing from ~400 W at 0 l/min to ~1000 W at 320 l/min. The Best Efficiency Point (BEP) is marked with a green checkmark at approximately 180 l/min and 15.5 mWs. A note indicates 'Motor output required (at n=3000 rpm and density 1,0 g/cm³)' with an arrow pointing to the green curve.</p>
System-pressure max.	PP PVDF	6,0 bar 6,0 bar	
Viscosity	< 160 Pa s		
Electrical motor	PM-Synchron IE4 Protection IP65 Isolation class F Plastic-coated		
			Variable speed, rated speed n=3000 rpm Values based on water at 20 °C (68 °F) / Measured value +/- 10% Subject to technical alterations !


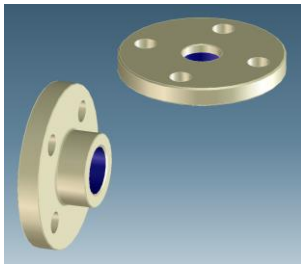
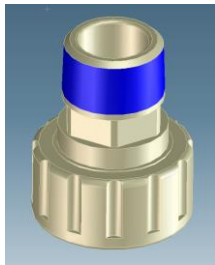
DATASHEET
Magnetically coupled pump
 Plastic coated

Motor output
 1,5kW
 Variable speed !



RM-KM 18/240

Accessories / Options

Hose connection	Flange (DIN, ANSI)	NPT - Adapter
 <p>40mm 50mm 63mm</p>	 <p>DN50 PN10 (DIN EN 1092-3) DN65 PN10 (DIN EN 1092-3) 2.5" (ANSI Class 150) 2" (ANSI Class 150)</p>	 <p>NPT (M) 2.5" NPT (M) 3"</p>

Subject to technical alterations !